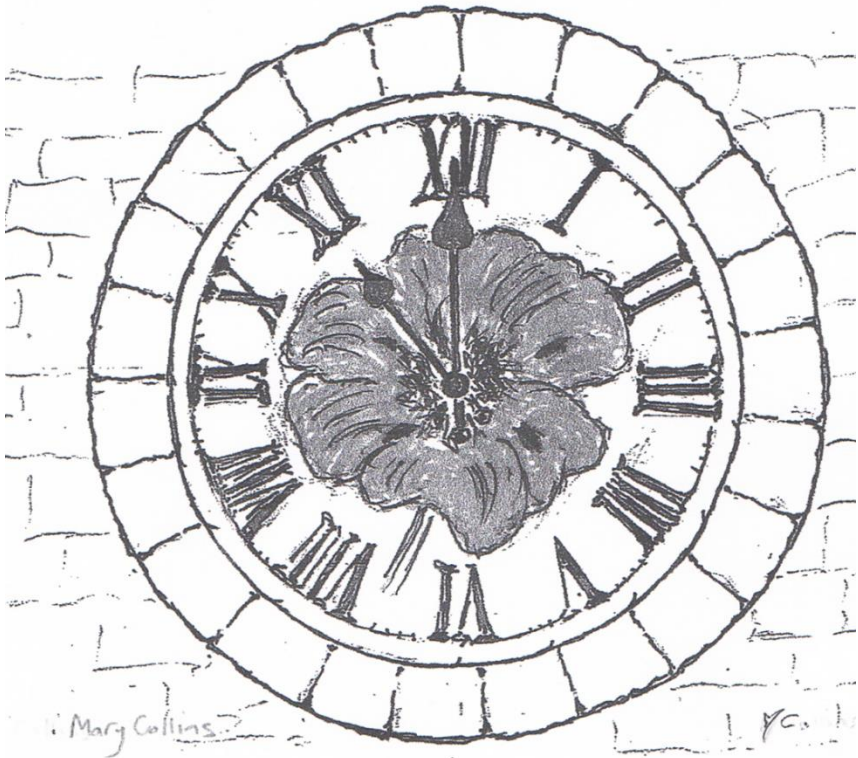


# CLEEVE PRIOR NEWSLETTER



NOVEMBER 2024

## Services in November 2024

**St.Andrew's services shown in bold**

3 Nov	11.00am	Eucharistic Service, Offenham
<b>10 Nov</b>	<b>10.45am</b>	<b>Remembrance Service, Cleeve Prior</b>
<b>17 Nov</b>	<b>11.00am</b>	<b>Eucharistic Service, Cleeve Prior</b>
24 Nov	11.00 am	Eucharistic Service, Bretforton
<b>Saturday 30 Nov, 6pm</b>		<b>PATRONAL FESTIVAL Cleeve Prior</b>

**Advance Notice,  
Saturday 7 December.  
10.30 – 12.30 pm  
Table Top Sale, in the Hall**

Priest in Charge Revd Joanna Fielding [revjo.eastvale@gmail.com](mailto:revjo.eastvale@gmail.com)  
Churchwardens Rosemary Roberts 01386 792568  
Safeguarding in our Benefice Safeguarding Officer – Lisa Farmer  
Tel.01386 40401

Safeguarding Advocate –  
For enquiries concerning Weddings, Baptisms and Funerals contact  
[Faith Quin eastvaleavon.churches@gmail.com](mailto:Faith.Quin.eastvaleavon.churches@gmail.com)

## **The Benefice of the East Vale and Avon Villages**

It is Monday 19 February 1962 and I am stood in a large room with approximately 80 other young men at RAF Bridgenorth. We had volunteered to join the RAF. Suddenly, above the noise of the conversations, a voice rang out, "Which one is Bolland?" I ambled forward and replied, "I am". The man dressed in a smart uniform with three stripes on his arm, looked at me with steely eyes and bellowed out, "I am, Sergeant, and stand to attention, you are in the Royal Air Force now". He wasn't a bit like the nice Sergeant at the Leicester recruiting office. I had been called forward because the Leicester Mercury evening newspaper was running an article on my first few days of service and the reporter and cameraman were there to see me.

I had signed on for nine years which completely changed my life, as being in the accounts department meant that I was able to have a career in office management in later life. Also, through the ministry of The Solders and Airman's Scripture Readers Association, I became a committed Christian and so throughout the past 62 years I have been able to share the Good News of the Gospel with hundreds of people. As I think back to that day, I think of the many thousands of men and women who did not volunteer but were conscripted to fight for this Country in the two World Wars.

Sunday 10 November is Remembrance Sunday, when we come together in the churches of our Benefice to remember all those who gave their lives in the two world wars, in order that we might enjoy a sense of freedom today.

*Revd (Retired) Ralph Bolland*



## Cleeve Prior Chroniclers



### **Annual Armistice Talk**

We are going to tell you the story of a young farm labourer from a Cleeve Prior Family, barely a youth, who left home in February 1912, to enlist in the 2nd Battalion the Worcestershire Regiment.

He went to war on Thursday, August 13, 1914, and never came home.

### **Special Guest Speaker**

**Mark Higgitt**

**Historian and Author**

### **Cleeve Prior Memorial Hall**

Saturday 9th November 2024

7.30 pm - Entry £5 - Bar

All entry fees to go to the Cleeve Prior War Memorial Fund

|

# PARISH COUNCIL NEWS

November 2024

## **Positive Progress**

The Parish Council is pleased to report on several recent positive outcomes:

- The phone mast at Froglands Farm has received planning approval. This is a step closer to resolving the mobile connectivity issues currently faced within the village.
- Geoff Powis has completed his required training and is now conducting Lengthsman duties throughout the village
- The Speedwatch team has had their training and is now fully functioning in the village.

## **IMPORTANT: Public Works Loan Request**

The Parish Council has been approached by the Cleeve Prior Community Pub Ltd to apply for a Public Works Loan to the value of £250,000 to help purchase the King's Arm pub. This will be an agenda item during the Parish Council meeting on Monday 4 November. A Public Works Loan can/will influence the precept paid by electors; this is an important topic to keep up to date with. Please do come along to the Parish Council meeting to find out more, and the Parish Council will keep electors informed at each stage of the process with details of the public consultation that will need to take place.

## **New Parish Council Website**

As part of the many improvements and better services being offered by the Cleeve Prior Parish Council, we are in the process of finalising the new Parish Council website. Anyone who has interacted with the existing website will have enjoyed the regular updates and information that has been held there. The new website will be the portal, easily accessible by all, to activities undertaken by the Parish Council including copies of agendas and meeting minutes, annual financial reporting and policies. There will also be a calendar of events, news updates and direct links to the existing websites of some of the fabulous groups and organisations we have in the village.

The website will be the 'window' to our wonderful village and will be used to keep villagers up to date with the more unusual, albeit necessary news such as planned roadworks, and dare I say Bidford Bridge re-opening!

The link to the new website and launch date will be communicated and will be readily available via the usual search engines.



WELCOME TO CLEEVE  
PRIOR PARISH  
COUNCIL

The plan is to have the website 'live' before Christmas.

CLlr Sandra Vincent

Parish Council meetings are now held on the first Monday of every month (except August) at 7.30pm. We allocate time on the agenda for your views, questions, and issues to be raised. Please come along if you have anything to ask or raise. If you are unable to attend a meeting, please contact the Clerk at [clerk@cleevepriorparishcouncil.co.uk](mailto:clerk@cleevepriorparishcouncil.co.uk). You can find meeting agendas on our website [www.cleevepriorparishcouncil.co.uk](http://www.cleevepriorparishcouncil.co.uk).

CLlr Bryan Eden: Chairman [bryaneden@cleevepriorparishcouncil.co.uk](mailto:bryaneden@cleevepriorparishcouncil.co.uk)

CLlr Mary Smith: Vice Chair [marysmith@cleevepriorparishcouncil.co.uk](mailto:marysmith@cleevepriorparishcouncil.co.uk)

CLlr Peter Wilson: [peterwilson@cleevepriorparishcouncil.co.uk](mailto:peterwilson@cleevepriorparishcouncil.co.uk)

CLlr Ian Robinson: [ianrobinson@cleevepriorparishcouncil.co.uk](mailto:ianrobinson@cleevepriorparishcouncil.co.uk)

CLlr Kevin Mellor: [kevinmellor@cleevepriorparishcouncil.co.uk](mailto:kevinmellor@cleevepriorparishcouncil.co.uk)

CLlr Sandra Vincent: [sandravincent@cleevepriorparishcouncil.co.uk](mailto:sandravincent@cleevepriorparishcouncil.co.uk)

CLlr Nicky Marshall: [nickymarshall@cleevepriorparishcouncil.co.uk](mailto:nickymarshall@cleevepriorparishcouncil.co.uk)

To keep up to date please see [www.cleevepriorparishcouncil.co.uk](http://www.cleevepriorparishcouncil.co.uk), the village website [www.cleevepriorvillage.co.uk](http://www.cleevepriorvillage.co.uk) and the village Facebook page [facebook.com/cleevepriorvillage](https://facebook.com/cleevepriorvillage).

## **30mph - 30mph - 30mph - 30mph - 30mph Cleeve Prior Community Speed Watch**

On Thursday 3 October, all ten community speed watch volunteers successfully completed their training delivered by Steve Bullock who is the Community Speed Watch Coordinator from the Road Safety Team, West Mercia Police.

There are three areas in the village approved by the Road Safety Team for us to stand and monitor speeds through our village and we are governed by strict rules for our protection when we are observing traffic activity.

The purpose of a CSW is not to deliberately set out to catch speeding vehicles but to encourage drivers to observe the 30mph speed limit through our village, the place where we live, our home. However, if vehicles are monitored as exceeding the limit we will record their details and send them to West Mercia Police who then take appropriate action.

We have already completed our first speed watch with more to come in the future, so lookout for the high-viz vests and ... Remember ... it's 30mph!

*Cllr Mary J Smith*  
CSW Coordinator



# NEWS FROM THE SCHOOL



Dear Villagers

We were absolutely thrilled at the beginning of the month to be asked by Gina Carr and the Heritage Trust to join them again to press some apples and make apple juice and turnovers. Our Key Stage 2 pupils walked over to the site and spent a very enjoyable morning with the lovely volunteers. Thank you to all involved.

We also welcome Karen Blanchfield from Little Litter Warriors back to our school to help us in a littler pick. We were astonished by how much litter we retrieved from our bushes and pathways. We will be resuming our litter picking duties around the village throughout the year. Please look out for us in our high-vis jackets!

We also held our Open Morning this month and welcomed prospective families into our lovely school. We are holding a further Open Day on the 27<sup>th</sup> November and I extend that welcome to all members of our village community to join us if they wish to see us in action. We will open doors at 9:30am should you wish to pay us a visit.

On a charitable front, we have a Poppy Appeal box in school, should you wish to donate or obtain a poppy in time for Remembrance Day, please pop in. We are also collecting for TEAMS4U shoebox appeal. Please pop in to see us if you wish to donate.

Our next Rags to Riches collection is the 19<sup>th</sup> November and we are happy to receive bags of clothing items from the 4<sup>th</sup> November 2024. You can just drop them in reception and we will store them until collection day. All proceeds go to the school.

**SAVE THE DATE** - Our Christmas Fayre will be 12<sup>th</sup> December 2024 from 2:30-4pm. More details will be posted on our Facebook site and school noticeboard.

Thank you again to the entire community for your continued support. Please pop in at any time if you would like to see the fantastic work that is going on in your village school.

Best wishes,

*Sarah Laughlin*, Head of School





## Cleeve Prior Heritage Trust September News from Noel and Trust Chair Gina

Our volunteers have been busy picking apples from our 15 acres of orchards and various trees around the village to produce our two most popular products:

- Field Barn Apple Juice

300 litres from apples picked and pressed by our team has just been bottled and this will be for sale shortly, once we have completed labelling.

- Field Barn Cider

We have completed pressing the rest of our apples to produce 1,000 litres of cider. This has been a herculean achievement, not least in picking a vast quantity of apples.

How do we make cider?

The apples are picked, washed and go through a Scratter which reduces the apples to pulp. This pulp is then "pressed" using both a manual and a hydraulic press. The apple juice is then transferred to fermentation tanks where it will stay until it goes for bottling some time around May and will be available to buy soon after.

Whilst our volunteers do most of this work, we do get some help from very eager school children who visit Field Barn and are looked after by our professional education team. We have enjoyed visits from three primary schools this month, Hollywood, Cleeve Prior and Dunnington. As well as learning about the natural world, the children really enjoy getting hands-on experience and of course, tasting the fruits of their labour.

CLEEVE PRIOR HERITAGE TRUST  
CONSERVATION, PRESERVATION, EDUCATION  
[cleevepriorheritagetrust@gmail.com](mailto:cleevepriorheritagetrust@gmail.com)  
07769 967243



CLEEVE PRIOR  
WAR MEMORIAL VILLAGE HALL  
email: [cleevepriormemorialhall@gmail.com](mailto:cleevepriormemorialhall@gmail.com)

## **Christmas Lights switch on Sunday 1 December**

Come to the Memorial Hall at 5.30 pm

Lights switch on at 6 pm

Live music and carol singing, mulled wine, mince pies.

Inside Hall if wet.

## **Memorial Hall Security**

It is the responsibility of the Management Committee to ensure the security of the Memorial Hall, and to this end we are requesting that all those within the village who hold keys confirm to the email address below why they need them, going forward.

This is to ensure that any future changes to the locks do not affect any organisation's use and enjoyment of the Hall.

*The Management Committee*  
[cleevepriormemorialhall@gmail.com](mailto:cleevepriormemorialhall@gmail.com)

### **The Newsletter**

The next issue of the Newsletter will cover  
December 2025 and January 2025.  
There will be no separate January 2025 issue.



CLEEVE PRIOR  
WAR MEMORIAL VILLAGE HALL  
email: [cleevepriormemorialhall@gmail.com](mailto:cleevepriormemorialhall@gmail.com)

**Seniors' Lunch, Tuesday 17 December 2024**

Cleeve Prior Memorial Village Hall

*Christmas Lunch with Live Entertainment*

The Seniors' Lunch is organised by the Hall Management Committee. As last year, we are requesting a donation of £5 per person. The qualifying age is 65 for individuals or at least one of a couple. Doors will open at 12.15 pm.

If you would like to enjoy the lunch on Tuesday 17 December, please fill in your details below and return the form with payment to one of the following Committee members, by **Tuesday 10 December**.

Mrs Susan Mortimer, Eastcote, Mill Lane,

Mrs Sally-Anne Richards, Hopcroft, Main Street

Mrs Rosemary Perl, Steppes Cottage, Cleeve Prior Manor

OR email the above address if you cannot return the form in time.

For comfort and safety, we are limiting seating to 60 places on a first-come first-served basis.

PLEASE PRINT YOUR DETAILS:

Name 1: .....

Name 2: .....

Address: .....

Telephone: .....

[ ] Please tick here if you have special dietary requirements.

Details: .....

[ ] Please tick here if you require transport to the Hall.

[ ] Please tick here if you are unable to come to the Hall and would like your meal delivered.



## **Who are your local Neighbourhood Officers for the 'Rural North' area?**

Your local Neighbourhood Officer is PC Alex Prentice. She can be contacted by emailing

[eveshamrn.snt@westmercia.police.uk](mailto:eveshamrn.snt@westmercia.police.uk), or [Alexandra.prentice@westmercia.police.uk](mailto:Alexandra.prentice@westmercia.police.uk). The Rural North patch includes: Offenham, Bretforton, Cleeve Prior, Pebworth including Meon Way Gardens,

Honeybourne, North, Middle and South Littleton. There have been some changes to the Evesham SNT, but PC Prentice will continue to look after the above areas, but will also now take on an extra 20 villages alongside her colleague PC Trowman. They will also now have a PCSO to assist them who has come from Evesham town centre, this being PCSO Luke Harris. The Evesham Safer Neighbourhood Team are actively now more than ever involved with our Evesham SNT Facebook page. Please follow Evesham SNT to keep up to date with our activities and to see when our local drop in/engagement sessions are.

### **Engagements**

As you may know, we do frequent engagement sessions in each of the villages across the Evesham Rural North patch and these have been and will be largely increased due to taking on additional villages in order to meet as much of the community as possible. Please try and come to any of these sessions if you feel the need to see us in person. We are always open to listening to the public if they believe the engagements with the public should be done differently. Please, if have any ideas on how we can better engage with the public, please let me know by emailing the above email address.

These engagement dates will be sent out in advance on Neighbourhood Matters. This is a free service which allows you to receive updates regarding crime in your area and also allows you to message your local officer. Take a look at the website for further information:

<https://neighbourhoodmatters.co.uk/>. We are trying to book these in advance as much as possible and will send out weekly NH Matters post with the schedule of drop in sessions.

### **Parish Council**

Every 3 months, Parish Councils make us aware of their Parish Priorities. If you are aware of any specific areas of continued concern in your area, please make your Parish Council aware in order for them to pass this over to your local officer.

### **PC Alex Prentice 21115**

#### **Safer Neighbourhood Officer | Evesham Rural North | West Mercia Police**

Evesham Police Station, Abbey Road, Evesham, WR11 4SS

**Direct Dial:** 101 or 0300333300

**Personal email:** [alexandra.prentice@westmercia.police.uk](mailto:alexandra.prentice@westmercia.police.uk)

**SNT email:** [eveshamrn.snt@westmercia.police.uk](mailto:eveshamrn.snt@westmercia.police.uk)

## THE CULVERT SEQUEL

Five guys came with a truck  
To put up four-way traffic lights for three days  
And repair the culvert  
Oh! what good luck.

These chaps wondered, looking down the hole  
That had appeared,  
What is that brick that has fallen into the culvert?  
Puzzled they thought that really weird

So they called in a man from the council  
Knowledgeable about such stuff.  
He said 'Well I be blowed,  
That be the brick that blocked up the 'ole.  
Just replace it, that should be enough'.

So instead of hours digging,  
In just twenty minutes  
They blocked up the top of the hole with a bigger brick  
And one of them said 'That should do the trick'.

As to from where to where  
The culvert do flow,  
Well we still  
Really do not know

We just hope the rains  
Don't wash the new brick  
Back down the hole  
With everyone surprised saying,  
'Well bless my soul'

Copyright © Don Barber 9 October 2024

*See October issue of the Cleeve Prior Newsletter for 'The Culvert'*

## News from The Kings Arms

Dear All, Thank you to the village who continue to support the Kings Arms. However, sadly, we need more. We still have people travelling to visit even with the bridge being closed but not to the volume they were, for obvious reasons.

We are currently in a position where bills and wages are not being covered by sales and if we carry on like this we will be forced to close.

The last thing I want to do is close your pub but it is proving not to be a viable business. I've tried to support the village to purchase the Kings and continue to offer any help with that if need be. There have been two viewings to purchase the property recently and both had the same concerns about how the pub is supported by locals.

We have lots of events coming up and, with Christmas around the corner, I certainly want to be open. We have plans for Christmas carol nights, Christmas Jazz, obviously Christmas menu and NYE parties.

Our special board is being dedicated to winter pub classics. Our reviews are great on Google and Facebook regarding the smoke house, but we do understand there need to be other offers available.

I hope the next email is about those events in more detail and not the bad news we are desperately trying to avoid.

Many thanks,

*Dave, Steve, Abbey, Lottie, Nikki, Josh, Will, Ady and Luke*

## **The next Quiz Night**

will be held in  
The Kings Arms  
on

Sunday 17 November at 7 pm.

Please book your table at: [bookings@kingsarmstavern.co.uk](mailto:bookings@kingsarmstavern.co.uk)

## **Macmillian Coffee Morning**

Many thanks to everyone who supported my Macmillian Coffee morning with donations, raffle prizes and cakes. It was a very successful morning, which I hope everyone enjoyed. We raised over £680 which is amazing. Thank you.

*Diane Byrne*

## **Cleeve Prior Golf Society**

Past Captains' Trophy

The final event of the 2024 Cleeve Prior Golf Society season was held at Puckrup Golf Club on Friday 16 October.

Due to illness and other factors, we were reduced to five competitors for the Jackson Trophy. Nonetheless, a brisk competition was conducted in perfect golfing weather on the beautiful Puckrup course. Our Past Captain of 2023, Rob Forster was declared the outright winner of a tightly scored competition. Congratulations to Rob and thanks to all who have competed and contributed to CPGS in it's 2024 season.

*Peter Wilson*

Hon.Sec. Cleeve Prior Golf Society

## **Cleeve Prior Ramblers**

Saturday 19 October

We assembled on the village green after a heavy night of rain and half expected our walk to be very wet but, by the time we arrived at our starting point in the village of Charlton, the sun had emerged and there was a light breeze.

Our group set off around 10 am past the fast-flowing Merry Brook that runs through the village and then stopped to admire their bus stop; decorated with village artwork. On up Ryden Lane, the birthplace of the chairman of Moorcroft Pottery, onto the Shakespeare Way and along the ridge with a stunning view over towards Evesham Manor and the site of the Battle of Evesham.

Just before the road descends to the Hampton Ferry over the river, we turned right down the footpath and came into a secret garden behind a row of houses for our usual pit stop. Carrying on, the route became more agricultural and some of the group saw overhead a small murmuration. We walked past some orchards and into a saturated field more like a paddy field after all the overnight rain, and then through the middle of some horse gallops. The route then continued down into Cropthorne a beautiful Saxon village where in the 8<sup>th</sup> century Offa, King of Mercia, had a summer palace on the site of Cropthorne Court which is right next to the ancient church.

Carrying on through the village and turning right off the road down the footpath next to Merry Brook, we returned back into Charlton and the Gardener's Arms for a well-deserved drink followed by lunch.

*Philip & Linda*

The next ramble on Saturday 16 November will be led by Matt and Sandra. Details will be sent out soon.





## Cleeve Prior Art Club

October has been a sad time for the Art Club with the loss of one of our founder members, Donald Wilson. Don passed away in October. He was much loved and very well respected for his wonderful talent as an artist and a wealth of knowledge and experience, which he was always ready to share. He made an enormous contribution to the development of the art club. With a ready smile and gentle personality Don will be sadly missed. Some of his work can be seen on the art club website (<https://theartclubcleeveprior.weebly.com>).

On a happier note, we enjoyed an informative session learning to sketch cats with Popi, who bravely negotiated the somewhat interesting journey from Bidford on Avon. Thank you Popi for all your handy hints and tips and a most enjoyable session.

In November we plan to welcome back George from Artbase, also from Bidford on Avon. This time we will learn how to paint a highland cow. Soon we will be experts in animal portraits!

For further information please contact Louise Conneeley on 01789 772749 or 07765 482722. Email: [louiseconneeley@gmail.com](mailto:louiseconneeley@gmail.com)



## **Book and Puzzle swap**

Wednesday 6 and Wednesday 20 November  
10 am to 12 noon in the Hall meeting room

Please join us. There will be plenty of  
tea, coffee, cake and chat.

We meet on the 1<sup>st</sup> and 3<sup>rd</sup> Wednesday of the month.



**Stanford and Friends**, Pershore Abbey

Saturday 23 November, 7.30 pm

Choral music by Stanford, Parry, Vaughan Williams and others in the centenary year of Stanford's death. All were eminent composers of their time and this promises to be an evening of rich and joyous music.

Tickets available from Susan Mortimer, 773453.

[www.pershorechoral.co.uk](http://www.pershorechoral.co.uk)



## **Grazey Dayz and Canapés**

officially open, now available to create a wow table-runner graze for up to 100 people, or smaller grazes or charcuterie boards for as little as two to four people.

Message me for details about creating something special that your guests will be talking about for dayz.

[Karen.roberts33@sky.com](mailto:Karen.roberts33@sky.com)

Or instagram @grazeydayz

## *Food Fayre*

*Established 1973, Catering for all occasions*

Canapés, Casseroles and Desserts  
Cocktail, Lunch and Dinner parties  
Freezer food for individuals and families  
Buffets, breakfasts, suppers, hampers and cakes

### **For hire:**

China, cutlery, linen and champagne glasses and all you need in your kitchen and for a party

Meals, prices and menus to suit individual requirements  
can be delivered or cooked and served at your home or venue.

Cairi Dyson, Email: [cairid@yahoo.co.uk](mailto:cairid@yahoo.co.uk)

Tel: 01789 491417, 07803 720184



## **Amanda Copperthwaite Select Mortgages**

With the cost-of-living crisis and the ever-changing interest rates, it's more important than ever before that you use the services of a fully qualified mortgage broker to help you with

your biggest financial commitment.

Whether you are moving home, needing a remortgage, looking to raise capital or simply looking for the next best deal, I can research the whole of market to ensure you get the most competitive deal to suit your circumstances.

Providing personal, independent and confidential advice on all residential and buy to let mortgages, and not forgetting that important mortgage protection insurance.

I will be able to guide you through the whole process to take away any unnecessary stress and be there for you from your initial enquiry through to mortgage completion.

Give me a call 07785 270217 to find out what options are available to you or drop me an email [amanda@select-mortgages.com](mailto:amanda@select-mortgages.com)

Select Mortgages UK Ltd is authorised and regulated by the Financial Conduct Authority. FCA 571378

Your home may be repossessed if you do not keep up with your mortgage repayments

### **D. Grace Plumbing and Heating**

Mobile: 07428 303733; Email: [darren.grace@yahoo.com](mailto:darren.grace@yahoo.com)

Main Street, Cleeve Prior, Evesham

New to the village, references supplied

Services:

Gas safe registered - Heating system installations

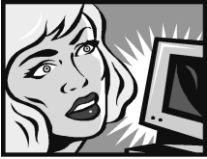
Heating system maintenance - Bathroom installations

### **St Joseph The Worker Catholic Church, Bidford**

The Presbytery, Quinney's Lane

Rev Father Stephen Squires

07484 719463



# eezyPC

. . . *is fixing IT*

Computer and Laptop repairs  
Microsoft Certified Professional  
Wireless \* Broadband \* Hardware \* Software  
On-Site \* Home Visits \* 01386 576132

## MG Roofing Repairs

No job too small.

Slates, tiles, ridge tiles, leadwork, Guttering, Firestone Flat Roof Systems,  
Chimneys, repointing.

Storm Damage and Insurance work welcome  
Stratford upon Avon and surrounding areas  
01789 490672, 07799 870848

[mgroofingservices@btinternet.com](mailto:mgroofingservices@btinternet.com),

[42 The Close, Cleeve Prior](#)



**JCS Motor Engineer - formerly Cleeve Prior Garage**  
Offering a full range of garage services at competitive prices



Servicing, Tyres, Diagnostics,  
MOT Preparation and Repairs  
Free local collection and return of  
your vehicle

**Over 40 years in the trade!**

John: 07977 333719

[jcsmotors@gmail.com](mailto:jcsmotors@gmail.com)

Location – Rear of TJ Auto Electrics, Crossleigh, The Cross,  
Offenham, WR11 8RB

# **Furrow Furniture and Kitchens**

Established 24 years

*Kitchens - Hand built or ready made  
Worktops - Granite, quartz and timber*

*Studies*

*Wardrobes*

*Bookcases*

*All internal cabinetry catered for.  
Bidford based workshop and showroom*

**Contact Matthew 07770 582331**



## VILLAGE and LOCAL EVENTS

Date	Event	Time	Venue
4 Nov	Parish Council meeting	7.30 pm	Hall
6 Nov	Book & Puzzle Swap	10 am – 12	Hall
9 Nov	Chroniclers' Armistice Talk	7.30	
pm	Hall		
17 Nov	Quiz Night	7 pm	KingsArms
(Please email <a href="mailto:bookings@kingsarmstavern.co.uk">bookings@kingsarmstavern.co.uk</a> to book table)			
20 Nov	Book & Puzzle Swap	10 am – 12	Hall
30 Nov	St.Andrew's Patronal Festival	6 pm	Hall??

**Cleeve Prior Art Club** meets in the Hall at 10 am on Thursdays

Contact Louise Conneeley on 01789 772749 and see

[www.theartclubcleeveprior.weebly.com](http://www.theartclubcleeveprior.weebly.com)

**Pilates** Classes in Cleeve **are suspended** during closure of Bidford Bridge.

**The CP Short Mat Bowls Club** meets in the Hall on Tuesday afternoons and Thursday evenings from September to May. Contact Gordon Davidson on 01789 773988.

**Yoga with Carly** in the Hall, Wednesdays, 6.30 to 7.30 pm

Tel: 07774 950411

### Useful contact details:

To hire the **Memorial Hall** or book for an event:

[cleevepriormemorialhall@gmail.com](mailto:cleevepriormemorialhall@gmail.com)

To join the **village email list**: [cleevepriormemorialhall@gmail.com](mailto:cleevepriormemorialhall@gmail.com)

To book **Field Barn**: [garnettclarke@btinternet.com](mailto:garnettclarke@btinternet.com)

**The Kings Arms**: 0330 016 0219 or [bookings@kingsarmstavern.co.uk](mailto:bookings@kingsarmstavern.co.uk)

**Village website**: [cleevepriorvillage.co.uk](http://cleevepriorvillage.co.uk)

## EVESHAM RURAL NORTH SAFER NEIGHBOURHOOD TEAM

Up-coming Cleeve Prior Drop-in Sessions with your Local Police Officers at the Village Hall will be posted in the Hall window

[PC Alex Prentice 21115](mailto:PC.Alex.Prentice@21115)

## The Church Rotas for November

### Sidesmen

10 Nov Mrs L Hughes  
17 Nov Mrs L Hawkins

### Church Flowers

3 Nov Mrs A Carless  
10 Nov Mrs A Carless  
17 Nov Mrs L Lupton  
24 Nov Mrs L Lupton

### Church Cleaning

Mrs M Sylvester  
Mrs M Greenwood  
Mrs L Hughes  
Mrs E Wilson

**Memorial Hall 200 Club**  
**October, £50:** Terry Dunne

Copy for inclusion in the **December/January** edition should be received by **Friday 22 November**.

There will be no separate January edition.

Please submit copy by email to the following  
**email address: [clevepriornewsletter@gmail.com](mailto:clevepriornewsletter@gmail.com)**

or contact the Editor, Susan Mortimer (773453)

**This Newsletter is published by St. Andrew's PCC**