

# CLEEVE PRIOR NEWSLETTER



DECEMBER 2017

## Church Services at St Andrew's for December 2017

- 3 Dec 11 am Advent Sunday Morning Prayer
- 10 Dec 11.00am Holy Eucharist Revd Philip Morton
- 15 Dec 6.30pm Carols by Candlelight
- 17 Dec 11.00am Holy Eucharist Revd Clive Leech
- 24 Dec 11.00pm Christmas Eve Communion by  
Extension
- 25 Dec 10.30am Christmas Day Family Service
- 31 Dec 11.00am Benefice Eucharist at North & Middle  
Littleton. Revd Philip Morton
- 7 Jan Morning Prayer

Please note that there is no service at Cleeve Prior on 31 Dec

**Rev'd Philip Morton**, The Vicarage, High Street, Badsey,  
Evesham Worcs. WR11 7EJ  
Email: [vicar@ourbenefice.org.uk](mailto:vicar@ourbenefice.org.uk)

### Churchwardens

Rod Carless Lis Hughes

**St Andrew's Church  
Cleeve Prior**

**Carols for Christmas by  
Candlelight**

**Friday 15<sup>th</sup> December at 6.30 pm**

**Followed by Mince pies and  
mulled wine in the Village Hall**

**Christmas Eve**

**Christmas Communion by Extension**

**At 11.00 pm**

**Christmas Day**

**Family Service for Christmas**

**At 10.30 am**

## **From The Parish Register**

23 October 2017

Doreen Bennett

Ashes interment

31 October 2017

Janetta Louie Heeley

Funeral

### **Children's Society Box Collection**

Thank you to all the Box Holders for their continued support. We raised £170.82 this year. If anybody else in the village would like to support the charity for vulnerable children please contact 01789 773357.

*Annette Carless*

## **The Benefice of the East Vale and Avon Villages**

Dear Friends,

If you are anything like me, then it may feel like the past year has flown past in the blink of an eye, and here we are once again getting ready for Christmas. But that's no bad thing, as Christmas is one of my favourite times of year!

In a similar way to last year, each of the churches in the Benefice will be having a number of different services over the Christmas period, from the traditional Carols by Candlelight, to crib services especially for children and families. So please do keep an eye open for details of the services near you. One way of checking service details is to look on the 'A Church Near You' website, simply go to [achurchnearyou.com](http://achurchnearyou.com). There really is something for everyone as we celebrate one of the most important festivals of the Christian year, the arrival of Christ as our Saviour.

So, whatever you end up doing this Christmas - whether going away, staying at home or visiting family and friends - I wish you all a very Merry Christmas, and a Happy New Year!

*Revd.Fr. Philip Morton*

# PARISH COUNCIL NEWS

## November 2017

The Council meets the second Monday of each month, except for August, at 7:30pm in the War Memorial Hall. If a parishioner has any comments or concerns please contact the Clerk or a councillor.

Chairman Sue Robinson: [sue.robinson333@gmail.com](mailto:sue.robinson333@gmail.com)

Cllr Beverly Rhodes: [Babybop2010@hotmail.com](mailto:Babybop2010@hotmail.com)

Cllr Richard Lasota: [richard.lasota@wychavon.net](mailto:richard.lasota@wychavon.net)

Cllr Hazel Stewart-Davies: [hazelsd1@outlook.com](mailto:hazelsd1@outlook.com)

Cllr Mary Smith: [marysmith.message@virgin.net](mailto:marysmith.message@virgin.net)

Cllr Peter Wilson: [wilsonatparkbourne@btinternet.com](mailto:wilsonatparkbourne@btinternet.com)

**WDC have formally allowed the Cleeve Prior Neighbourhood Plan to go to referendum. The Neighbourhood Plan Referendum will take place on Thursday, the 1<sup>st</sup> of February. All parishioners are encouraged to vote on the day at the War Memorial Village Hall. The Neighbourhood Plan will be available on the Council and WDC websites. Hard copies will be available in the Tea Room.**

Currently there is a relatively small amount (£1600) of New Homes Bonus available to Cleeve Prior for a project of our choosing. This note is to request suggestions of how this sum might be used in the parish, but with a wider aim of seeking suggestions that would also meet with the criteria below. As we know, there are many government sponsored agencies that can dispense funds for community projects, so suggestions for wider ranging projects for the future would also be welcome. The criteria, quoted by WDC, for allocation of NHB funds are:

*'Innovative projects which have a clear community benefit and community support. Projects should be well thought through and of a scale that ensures that the monies create a legacy and benefit for communities.'* The emphasis seems to be placed on producing something with lasting impact and benefit to the community. If you have any ideas, please pass them to the Clerk.

The Council set the budget for FY 2018-19. Highlights include:

- £21,000 precept (4% reduction)
- Revenue expenditure: £19,620

- FY 2017-18 forecasted reserves: £64,094
- Street Lights and CPO Land highest risk items: £29,500 combined reserves
- Parish Improvement Projects & School Field Play Equipment reserves: £10,500
- FY 2018-19 forecasted balance of £67,949

The complete budget can be viewed on the Council website. Now that there are sufficient reserves built up the Council plans to initiate the process of improving the playground equipment and 21 street lights owned by the Council.

Finally, the Council is still short one member. Parishioners who are interested in being co-opted onto the Council should contact the Clerk.

*Sean Arble, Clerk to the Council*  
01789 490 501, [clerk.cleeveprior@gmail.com](mailto:clerk.cleeveprior@gmail.com)



## **Cleeve Prior Ramblers Carol Singing – Friday 22 December**

Just to make sure you are properly in the Christmas Spirit, the Ramblers will be carolling their way round the Village on Friday 22 December.

Our proposed timetable will be as follows:-

6.00 pm	Meet at Mill Lane Nurseries
6.30	West End
6.45	Froglands
7.10	Upper Main Street
7.20	The Close – on the Green
7.40	Memorial Hall
7.50	Lower Main Street/Hoden Lane
8.10	Manor Court
8.20	The Manor

We will be ringing a bell to herald our arrival so please listen out for us. We are looking forward to singing for you and to wish you all a Merry Christmas. All money collected will go to St. Andrew's Church.



# News from the School

Well what an exciting half term we have had so far and there is more to come!

The most important announcement we have to make is that following the closure of Cleeve Prior Preschool and Rising 5's group, the governors took the decision to open a preschool on site and so, Little Chestnuts Preschool has come into being catering for children from the age of 2. We have always had a close relationship with the preschool but this now means that the staff and children are now members of the Cleeve Prior Family from a very early age.

Our nativity play this year will be "This is the way to Bethlehem" and by the time you read this rehearsal will be underway. The performances will be on Wednesday 13<sup>th</sup> December at 1.30 & 6pm and on Thursday 14<sup>th</sup> December at 6pm.

Our annual pantomime visit this year will be to the Swan Theatre in Worcester to see Sleeping Beauty on Friday 15<sup>th</sup> December.

Our KS2 pupils are already getting excited about performing for the elders of the village at their Christmas lunch on Tuesday 19<sup>th</sup> December.

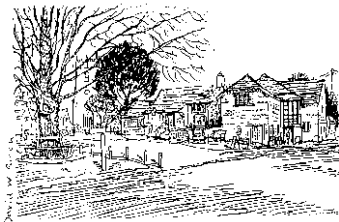
We are extremely grateful to Annamarie Heelis for organising the Christmas lunch for us in the village hall as we are unable to use the Kings Arms as we have done so in the past. It will be much nicer than school dinner in the school hall!

And finally, there is a vacancy on the school board of governors for our expanding village primary school. If you are interested and would like more details please contact The Headteacher Mrs Sarah Newbury or Clerk to the Governors Mrs Becky Ellison on 01789 772276 .

Wishing you all a very merry Christmas and a happy and healthy New Year

Thank you.

*Sarah Newbury*



## CLEEVE PRIOR WAR MEMORIAL VILLAGE HALL

email:[cleevepriormemorialhall@gmail.com](mailto:cleevepriormemorialhall@gmail.com)

### **Saturday 9 December: Cleeve Prior Prepares for Christmas, 2 pm**

Father Christmas will arrive at 2pm and can be visited in his Grotto \* Surprise Gift stall \* Winter plants \* Win a Christmas cake \* Bottle tombola \* The Best Christmas Table Decoration competition \* Children's Christmas Card and colouring competition \* Glassware stall \* Mulled Wine \* Teas \* Prints of historical village photographs to order.

**Competitions for Christmas card and colouring** are being run in conjunction with the School.

**Table Decoration competition** Three classes: Juniors / Teens / Adults. Make a Christmas Table Centrepiece, from any materials, on a Christmas theme. Bring your entry to the Hall before 1 pm on 9 December. Do not display your name.



### **CHRISTMAS TREES**

Order from Mick Hughes as soon as possible, on 01789 772578 or [mahughes@doctors.org.uk](mailto:mahughes@doctors.org.uk). Trees ordered before 9

December can be collected from the Hall on that day. Trees ordered on 9 December can be collected from the garden of Japonica Cottage in the week beginning 11 December. Prices as last year: 4' – 5', £25; 6' – 7', £30.

### **Tuesday 19 December: Seniors' Lunch, 12 for 12.30 pm**

To book your place at the Lunch, please complete the form on the next page and return it to one of the Committee members named.

There will be sherry on arrival and the festive Menu will comprise a main course of roast turkey with all the trimmings, followed by trifle, then coffee, mints and mince pies, all accompanied by carefully selected wines.

Entertainment will be provided after the lunch.



**Seniors' Lunch**  
**Tuesday 19 December, 12 for 12.30 pm**  
**Cleeve Prior Memorial Village Hall**

The Seniors' Lunch is offered by the Hall Management Committee to all residents over 60 years of age. If you would like to enjoy the lunch and entertainment on Tuesday 19 December, and have not already given your name to the organisers, please fill in your details below and return the form to one of the following Committee members, by **Monday 11 December**:

Mrs Susan Mortimer, Eastcote, Mill Lane, or  
Mrs Rosemary Perl, Steppes Cottage, Cleeve Prior Manor

The Hall Management Committee looks forward to seeing you on 19 December.

**PLEASE PRINT YOUR DETAILS:**

**Name 1:** .....

**Name 2:** .....

**Address:** .....

**Telephone:** .....

Please tick here if you have special dietary requirements.

**Details:** .....

Please tick here if you require transport to the Hall.

Please tick here if you are unable to come to the Hall and would like your meal delivered.

## **Boxing Day treasure hunt, 12 noon**

A treasure hunt organised by Les Bratt and Jo Robinson will start from the Green at 12 noon. All are welcome. Contestants must be back by 2 pm for adjudication. A significant prize will be awarded to the winner.

The Hall will operate a bar from 12 noon.

A pop-up bar will be open at the Memorial Village Hall every Friday night, 6.30 pm – 8.30 pm for early doors until the Kings Arms re-opens.

Please come along.

The Hall holds a Premises Licence which permits the running of bars in the Hall or elsewhere on condition that a Committee member is present during the hours of service.



## **New Year's Eve**

With the Kings Arms being closed, it has been decided to investigate the opportunity of having an event in the Memorial Village Hall, to celebrate the New Year.

The proposal is that we have a village party, with music, starting about 9.00pm . There will be no charge , but anyone attending would be requested nearer the time to bring some nibbles. There will be "The Pop UP Bar" and we have a licence till 1.00pm.

Could you please let us know whether you would want to attend as soon as possible to give us an idea whether such an evening would be viable. Contact [cleevpriormemorialhall@gmail.com](mailto:cleevpriormemorialhall@gmail.com).

We will confirm the full details once we have understood the response from the village.

*The Management Committee*

## **Women's Fellowship**

The 7 November meeting was very enjoyable, doing Brain Teasers with Anagrams, Building Puzzles and making words from the Bomb game. These were supplied by Sandra. Thank you. It was fun as well as keeping us alert.

The December meeting is a Cracker Flower arrangement with Barbara. Don't forget your tins, flowers, etc. This will be on Tuesday 5 December, 2.15 - 4pm in the Community / Tea room.

*Meryl Holdbrook*

**NWR**

Ten members gathered expectantly at Annette's house on 15 November for the Annual Telephone Treasure Trail which, in previous years we had found both taxing on our little grey cells but most enjoyable.

As the time approached for the telephone lines to open we sat with pen & paper; reference books and even a tablet for a little back up if needed; and oh did we need it. We had been supplied in advance with the first clue and that was causing us problems but we felt as the evening wore on that when we had worked out the theme for the quiz that the answers would start to flow; but I'm afraid this was not the case this year. We racked our brains time and time again over the clues, coming up with what we thought were perfectly good answers only to be crushed by the phrase "I'm sorry that's incorrect"; but we soldiered on telling ourselves that all the other groups around the country must be having the same problem. We have yet to find out if this is true as the complete set of answers are not available till next week; but we finished feeling we had made a good attempt; got half the questions correct and enjoyed the time after the phone lines had closed; with a glass of wine; a delicious buffet, supplied by everyone and time to shake our heads over the answers that had escaped us.

Our next meeting is the January 2018 visit to the RSC for the Christmas Carol production; which is now fully booked and all tickets have been sold.

*Linda Garnett-Clarke*

## **Circuit Training**



Cleeve Prior Memorial Hall  
Starting Monday 15 January  
Monday mornings, 10.30 – 11.30 am  
Only £5 per session!

Contact for more info: Adam – 07860 679031



## CLEEVE PRIOR GARDEN CLUB

On 1 November, Howard Drury gave us a presentation of a selection of the lesser known gardens of Cornwall, accompanied by background music. When you consider how often we complain about our weather it really was amazing to learn how many tropical plants thrive in these gardens, which are only a few hours' drive away. We were shown Trewithen, specialising in Rhododendrons and Azaleas, and Tresillian, where large collections of many old apple varieties are kept, under-planted with ancient daffodils. We also looked at Lamorran in St. Mawes, Pine Lodge in St Austell, Marsh Villa in Par, Bosvigo House in Truro, and Hidden Valley near Fowey. Altogether it was an entertaining evening with all the gardens worth a visit if you are in the area.

One of our away days in 2018 will be on 9 June, when Members and Guests will have the opportunity to visit the most impressive gardens of Michael Heseltine at Thenford. Travel details and costs to follow at a later date.

6 December is our Christmas Social Meeting with a fun quiz, a Christmas demonstration by Pat Colbourne, some advice on Winter Garden jobs by Roger Onions, and some seasonal mulled wine and mince pies.

We start the New Year on 3 January with a talk by Simon Gulliver on Roses – History and Practicalities of Growing.

I would like to wish all members, future members and visitors a Happy Christmas and Happy Gardening in 2018.

*Jan Stewart*

*Apologies for mistakenly repeating the October notice in the November Newsletter. Ed.*



**Cleeve Prior Heritage Trust Calendar, 2018**, featuring twelve beautiful new photographs of the village, will be launched at the Memorial Hall on Saturday 9 December, when Cleeve Prior prepares for Christmas. £5 per copy, also available from the Farm Shop. Mail order, at £6, from [jkr@jkrgroup.com](mailto:jkr@jkrgroup.com).

## **Cleeve Prior Ramblers**

On 18 November, Seventeen ramblers and three dogs met at the village green ready for the rambler's trip to Blockley, led by Paul and Julie. The weather forecast was for a cloudy and overcast morning, that bit was true, however the rain was not on the agenda.

We drove to the Great Western Arms pub at Blockley where we were met by the landlord to take our food orders, and equipped ourselves for a wet walk. Leaving the pub car park we got a good view of Malvern Mill, dating back to 1617. First starting out as a flour mill and then converting in 1700 to a Silk Mill, silk being a prominent trade in Blockley. Our walk took us through the village passing through the churchyard of St Peter and St Paul, where 'Father Brown' was filmed in 2012. Carrying on up through Blockley high street we eventually came to the 'Warren' where we turned right and began our climb past Warren House with its beautiful gardens and ponds, forking right following the woods and continuing the climb when we eventually crested the ridge to Shales Coppice. On days when the sun shines, you get beautiful views of Blockley, and the rolling hills beyond. However, today was not sunny so we made do with mist and rain.

The ridge took us past Dovedale farm, and through Hobbs quarry. Crossing the road into Norcombe wood, where we were met with the beautiful Autumn colours of trees shedding their leaves. Although the humans were feeling the strain of more climbing, the dogs were still full of energy.

Having climbed to the highest point, we made our way across open fields into the coppice where we took shelter and stopped for refreshments. Our next point of interest was a Biomethane and Digester plant. Well hidden from sight in a disused quarry, the plant digests maize and animal waste to produce methane and inject the gas into the national gas grid. Passing the plant we walked through a quarry still producing Cotswold stones, turning right to begin our descent back to Blockley.

Looking forward to our lunch, the warmth and a pint, we made it to the pub. The conditions made it a challenging walk, but the ramblers are a hardy bunch and made the most of it – well done everyone!

*Peter Wilson*

A reminder that the Ramblers will be singing carols around the village on Friday 22 December.

## The Phone Box

A much neglected village icon has recently been given a face lift. Since the removal of the telephone, our Red Phone Box was in a rather sorry state and the Parish Council agreed to fund its restoration.

The Cleeve Prior Telephone Kiosk is a K6 model which was designed by Sir Giles Gilbert Scott in 1935 to commemorate the Silver Jubilee of King George V. Installation of the K6 began in 1936 with some 8,000 being placed outside shops and Post Offices throughout the country. The bright red colour was not universally popular and many places requested that the Post Office allow their boxes to be painted a more subtle shade of grey with red only being used on the glazing bars. Indeed Gilbert Scott himself did not really like what came to be known as Post Office Red. The Royal Fine Arts Commission endorsed both the design and the colour and the model has stood the test of time. Weighing three quarters of a ton and made from cast iron with a teak door they have become one of the most easily recognised symbols in the country. Our K6, standing at the corner of Quarry Lane and Main Street beside what was once the site of Noakes and Crofts, the village shop, was one of the boxes installed to mark the King's Jubilee.



The renovation – carried out by Paul Robinson and Peter Wilson – was completed in time to mark another anniversary of an important personage – Cleeve Prior's very own Mike Walker who this year celebrated his 80<sup>th</sup> birthday. This makes him one year younger than our phone box. I'm sure everyone will agree that both Mike and the K6 are looking in excellent shape.

*Evelyn Wilson*

### **KEY FOUND**

If you lost a door key on the Millennium Green in November, please contact 01789 772662 to collect.

**Bidford Area Community Choir**

present a Winter Concert

**Songs for the Season**

Saturday 2 December 2017, 7.30 pm

The Barn, Waterloo Road

Tickets available in advance or on the door.

Please call 01789 774719 for tickets

Adults £7.50, under 16s Free, Refreshments included

**Proceeds in aid of Life space, a local charity offering one-to-one mentoring to young people in distress.**

**Pershore Choral**

Saturday 16 December in Pershore Abbey, 7.30 pm

Christmas Concert

A festive occasion with Christmas music and carol singing

Tickets from Gina Carr

[www.pershorechoral.org.uk](http://www.pershorechoral.org.uk)

**Pantomime**

**Robin Hood and his Merry Men**

Crawford Hall, Bidford on Avon

Friday 5 January, 7.30 pm

Saturday 6 January, 2.30 and 7.30 pm

Tickets £5, tel: 773742

**St Joseph The Worker Catholic Church**

Quinney's Lane, Bidford on Avon B50 4JL

Times of Mass: 5.30pm Saturday; 11am Sunday

Parish Priest: Canon Garry Byrne

Telephone: 01789 773291

Website: [sjtw-bidford.org.uk](http://sjtw-bidford.org.uk)

**A warm welcome to all Visitors**



## LITTLETONS SCHOOL ARE LOOKING FOR:

### A Lunchtime Supervisor

The role is to support the Head teacher or designated member of staff in charge at lunchtimes to ensure the smooth running of the hot meals, packed lunches and the supervision of children at play. They are an essential part of school life and are seen as a valuable asset to the school organisation.

Position: term time only and permanent.

Job Type: Part-time 1 hour per day (12.20-1.20pm) Term time only

Please include personal email address for correspondence.

This school is committed to safeguarding and promoting the welfare of children and young people. The successful applicant's appointment will be subject to a satisfactory criminal record check cleared by the Disclosure and Barring Service.

Contact: 01386 830695; [office@thelittletons.dowmat.education](mailto:office@thelittletons.dowmat.education)

## Strictly Ballroom and Latin

### Class venues

Stratford Race Course TUES 7 to 8:30pm

Morton-in-Marsh *Redesdale Hall* THUR 7 to 8:30pm

Aston Cantlow Village Hall FRI 7:30 to 9pm

New courses starting w/c 24 October. Classes run all year.

Private lessons by appointment.

Wedding dance – choreographed to your own special song.

**Contact:** [www.margaretgreenwood.co.uk](http://www.margaretgreenwood.co.uk);

**Tel: 01789 778007 07976 958738**

## Pure Lawns

### Lawn Care and garden maintenance

Professional lawn and garden service located in South Littleton.

Our services include:

Fertilising - Weed Control - Moss Control - Garden maintenance -Disease and insect control - Scarification - Hollow tine aeration -

Lawn mowing

Contact Philip Rigby

Call: 01386 834 198 or text to: 07779 410 993

[www.purelawns.co.uk](http://www.purelawns.co.uk); [info@purelawns.co.uk](mailto:info@purelawns.co.uk)

## **WILDLIFE & WILDERNESS**

OUTSTANDING TAILOR-MADE HOLIDAYS &  
EXPERT LED TOURS WORLDWIDE

Safaris : Luxury Holidays : Northern Lights : Winter Activities  
Expedition Cruises : Family Adventures  
AFRICA : INDIA : LATIN AMERICA : AUSTRALIA :  
NEW ZEALAND : CANADA : EUROPE.

CALL US AT OUR BROCKWEIR OFFICE  
01625 838225, [WILDLIFEWILDERNESS.COM](http://WILDLIFEWILDERNESS.COM)  
Dr Steve Banner (FRGS)

## **RWH Accountancy Limited**

Personal Tax Returns ... .. From £95  
Sole Trade Accounts ... .. From £295  
Company Accounts .. .. From £495  
Other Services: VAT Returns, Bookkeeping, Payroll  
Contact Richard: 07823 889711 – [richard@rwhaccountancy.co.uk](mailto:richard@rwhaccountancy.co.uk)

## **The Complete Property Improvement Package**



Carpentry & Painting service  
Bespoke Furniture & Joinery Manufacturing  
Fitted Bedroom & Kitchen Installations  
Garden & Property Maintenance

**RP JOINERY** Unit 5 Worcester Enterprise Centre  
Shrub Hill Industrial Estate, Worcester, WR4 9FG

Tel: 01905 780304; Mob: 07871 848600

Visit our **NEW Website:** [www.rpjoineryshop.com](http://www.rpjoineryshop.com);

E Mail: [rp-joinery@hotmail.com](mailto:rp-joinery@hotmail.com)

## *Brookleys Bed and Breakfast*

**Tel 01789 772785**

Christine & Ted Dydé  
Honeybourne Road  
Bidford on Avon  
Warwickshire B50 4PD

**Mobile 07803 727233**

Brookleys welcomes you with a friendly cup of tea.

Full English breakfast or choice from the breakfast menu.

Major credit cards accepted.

[www.brookleys.co.uk](http://www.brookleys.co.uk)



Established 1990

Twin ground floor rooms  
En-suite with easy access

All rooms centrally heated with TV and hospitality trays

Lovely garden and secure parking

*Email [brookleyschris@aol.com](mailto:brookleyschris@aol.com)*

## **Evesham Landscapes**

4 The Close, Cleeve Prior, Evesham, WR11 8LF  
01789 508261 / 07867 504651

We specialise in Drives, Patios, Fencing, Ponds, Hedge Cutting, Concreting, Drainage, Turfing also general Garden maintenance.

## **COTSWOLD UPHOLSTERY**

serving the Cotswolds and surrounding areas

Re-upholstery – wide range of fabrics and leather

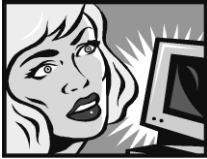
Wing armchairs, suites, chaises longues

Loose covers

Frame / spring repairs

Call Tony on 01789 621156, 07956 910701

Over 30 years' experience, domestic and commercial  
7 days a week, 8 am to 9 pm



# eezyPC

. . . is fixing IT

Computer and Laptop repairs  
Microsoft Certified Professional

Wireless \* Broadband \* Hardware \* Software  
On-Site \* Home Visits \* 01386 576132

## MG Roofing Repairs

No job too small.

Slates, tiles, ridge tiles, leadwork, Guttering, Firestone Flat Roof Systems, Chimneys, repointing.

Storm Damage and Insurance work welcome

Stratford upon Avon and surrounding areas  
01789 490672, 07799 870848  
[mgroofingservices@btinternet.com](mailto:mgroofingservices@btinternet.com)



## Window Cleaner

Gutter cleaning, patio jet spraying. Local service.

**Jarrad Gavin**

42 The Close, Cleeve Prior

**01789 490672; mob 07707 648578**

## Cleeve Prior Garage



John Stanley, Hoden Lane, Cleeve Prior, WR11 8LH  
Tel: 01789 773795; Mobile: 07977 333719

*We offer a full range of garage services at competitive prices:*  
Brakes, Clutches, Diagnostics, Exhausts, Timing Belts, Tyres, MOT  
Preparation, MOT Repairs, Servicing, Suspension, Collect & Return Service,  
Federation of Small Business - 35 years' experience!

web [www.cleevepriorgarage.co.uk](http://www.cleevepriorgarage.co.uk) email [jcsmotors@yahoo.co.uk](mailto:jcsmotors@yahoo.co.uk)

Aimee Stanley  
(daughter of John at the Garage)

*the work*  
*by aimee stanley*

Your local Mobile Hairdresser and  
Freelance Makeup Artist.  
All hairdressing services and makeup  
or nail treatments for those special occasions.



**Mobile: 07392 297511**

Able to carry out everyday treatments or create special occasion designs  
*Pamper Parties \* Proms and Weddings \* Shellac \* Minx*  
*Facials \* Pedicures \* Manicures \* Special occasion hair services*



## HQ Hair Design

Book now for your mobile appointment or come into our  
Pop-Up salon with Peter  
Call 01905 27381

## VILLAGE NOTICES

The WCC Mobile Library service makes one stop in the village on the 4<sup>th</sup> Tuesday of each month, except Dexember. The next visit will be on Tuesday 23 January, when it will stop in The Close between 10.15 and 10.35 am.

**Cleeve Prior Memorial Village Hall**  
**200 Club winner, November**  
**£50: Barrie Banner**



### **Safer Neighbourhoods Team**

*Constable Jamie Lee*

*PCSO Bradley Sansom*

*Collar no.2803*

*Collar no.40246*

*PCSO Elliott Wilson, Collar no.40271*

The Team will be holding regular informal drop-in sessions in the Police Post every Thursday morning between 10 and 11 am (operational needs permitting). Village residents are invited to call in and meet the team for a chat or to report issues of concern.

**Neighbourhood Watch:** [cleevenighbourhood@gmail.com](mailto:cleevenighbourhood@gmail.com) is the place to report any suspicious cars or people in the neighbourhood. You will not be required to give your name or details.

Follow Cleeve Prior on facebook at:

<https://www.facebook.com/cleevepriorvillage>

and Twitter: CPPC Cleeve Prior



## VILLAGE EVENTS

5 Dec	Women's Fellowship	14.15	M Holdbrook	
6 Dec	Garden Club	19.30	J Stewart	Hall
9 Dec	Cleeve Prior Prepares for Christmas	14.00	Mgt Cttee	Hall
11 Dec	Parish Council Meeting	19.30	Par Clerk	Hall
13 Dec	Tea Room & Lending Library	14.30	B Walker	Hall
15 Dec	Carols by Candlelight	18.30	PCC	St.Andrews
19 Dec	Seniors' Lunch	12.00	Mgt Cttee	Hall
21 Dec	Golf Society Dinner	19.00	V Birnie	Hall
22 Dec	Rambler's Carol singing	18.00	Starting in	Mill Lane
26 Dec	Treasure Hunt	12.00	Start on the	Green
27 Dec	Bridge Club	20.00	B Taylor	Hall

### 2018

2 Jan	Women's Fellowship	14.15	M Holdbrook	Hall
3 Jan	Garden Club	19.30	J Stewart	Hall
8 Jan	Parish Council Meeting	19.30	Par Clerk	Hall
10 Jan	Tea Room & Lending Library	14.30	B Walker	Hall
15 Jan	Circuits Class (see below)	10.30	Adam	Hall
24 Jan	Tea Room & Lending Library	14.30	B Walker	Hall
31 Jan	Bridge Club	20.00	B Taylor	Hall
1 Feb	Referendum on NDP	07.00 - 22.00	WDC	Hall
6 Feb	Women's Fellowship	14.15	M Holdbrook	Hall
7 Feb	Garden Club	19.30	J Stewart	Hall
12 Feb	Parish Council Meeting	19.30	Par Clerk	Hall
19 Feb	Half Term			

The CP Bowls Club meets in the Hall on Tuesday afternoons and evenings and on Thursday evenings, from September to May. Contact: Linda Garnett-Clarke on 773287.

The Circuits Class\* will take place every Monday at 10.30 am, starting on 15 January 2018. Contact Adam on 07860 679031.

Pop up Bar in the Community Room, Fridays from 6.30 to 8.30 pm, during closure of The Kings Arms.

## The Rotas December 2017

### Sidesmen

3 Dec

Mrs L Hughes

10 Dec

Mr S Lupton

15 Dec (6.30pm)

Mr A & Mrs J Taylor

17 Dec

Mrs M Greenwood

24 Dec (11.00pm)

Mrs L Hughes, Mr R Carless

25 Dec (10.30am)

Mrs S Robinson

7 Jan

Mrs J Taylor

### Church Flowers

3 Dec

No

10 Dec

Flowers

17 Dec

during

24 Dec

Advent

25 Dec

Mrs A Carless

7 Jan

Mrs J Selby

### Church Cleaning

Mrs S Richards

Mrs B Walker

Mrs L Hughes

Mrs J Winter

Mrs L Hughes

Copy for inclusion in the January edition

**By Saturday 16 December please**

Note early date, due to Christmas & NY Bank Holidays

Please submit copy by email to the following **NEW**

**email address: [cleevepriornewsletter@gmail.com](mailto:cleevepriornewsletter@gmail.com)**

The Editor and all persons named in this Newsletter can be contacted via the email address above.

**Advertising:** Please contact the Editor for information.

The Editor would be pleased to receive any photos of local interest for possible inclusion in future Newsletters. Please email them to the above address.

This Newsletter is published by St. Andrew's PCC