

CLEEVE PRIOR NEWSLETTER



MARCH 2021

The Benefice of the East Vale and Avon Villages

This month marks five years since I started here as vicar. It's been a wonderful experience getting to know the Vale of Evesham, learning about the wonderful people who live here, and sharing some of the most important moments in people's lives, such as weddings and christenings. Earlier on today I was out for a walk with my daughter, and as we passed houses where people live that I've been fortunate to meet, I realised how much being here has changed me in so many positive ways.

I thought about the first meeting I had with the Bishop of Worcester, who put me through my paces before letting me loose on the villages. We talked about the privilege that parish ministry is, and that sometimes it can be hard work with long hours. But the Bishop reminded me that, although I often sit at my desk with paperwork piling up, my real role is to pray for the people of the parishes. And not just the people who attend church. The real job of a parish vicar is to pray for every single person who lives in these parishes. I haven't met most of them yet, but I pray for them, nonetheless. If you see me walking about one of the villages with my daughter, know that I am praying as I go. It may not seem much, but to me it's the best job in the world.

Oh, and if you ever need something prayed for, don't hesitate to get in touch.

Revd. Philip Morton

World Day of Prayer: Build on a strong foundation

Friday 5 March at 10.30 am . Service can be viewed on-line via the link on the WDP website, <https://www.wwdp.org.uk/wdp-2021/>

This Service has been put together by the women of the republic of Vanuatu located in the South Pacific Ocean.

I have some orders of service and an information sheet. Please phone or email if you would like a copy.

Lis Hughes

01789 7725 78. lis_hughes@hotmail.com

St.Andrew's Churchyard roses

The planting has begun when the weather allows and we will keep you updated when help is needed . So far we have planted six and they look happy!

Thankyou to everyone who has sponsored a rose. There will be 21 new roses when the project is completed.

St Andrew's Church

Services at St Andrew's for March

We can only hope that if and when any relaxation of the lock down restrictions are announced at the end of February, we may be able to plan our way to normalising our services at St Andrew's. When we know of the possibilities we will of course contact everyone.

For private prayer and meditation, the church will continue to be open from 11.00am until 1.00pm on Wednesdays and Sundays

There is a service of Morning Prayer via Zoom every Sunday morning at 9.30am. If you would like to join that, I can let you have the link (01789 773357).

There will be a Eucharist service at Badsey church every Sunday at 11.00am., online services of Holy Communion will continue as normal, and sermons will be published on the website.

Revd Philip Morton, The Vicarage, High Street, Badsey, Evesham Worcs
WR11 7EJ 01386 832599

Churchwardens Rod Carless 01789 773357

Lis Hughes 01789 772578

Safeguarding in our Benefice

Benefice Safeguarding Officer – Lisa Farmer Tel.01386 40401 ,

Safeguarding Advocate – Elizabeth Spencer Tel. 01789 720078

For enquiries concerning Weddings, Baptisms and Funerals contact the Benefice administrator, Wendy Stafford. Tel. 01386 424728

Church cleaning rota.

In anticipation of services being allowed to take place in the church in the not too distant future, I hope to prepare the cleaning rota.

Please could you let me know if you would be prepared to join the volunteers. It involves about two hours every six months. All cleaning materials are provided. Thankyou

Lis Hughes, 01789 772578

PARISH COUNCIL NEWS

February 2021

Until further notice the Council will meet the second Monday of each month, except for August, at 7:30pm **via Zoom**. The Zoom link will be provided on each agenda which is posted on the Council website and village noticeboard prior to meetings. If a parishioner has any comments or concerns please contact the Clerk or a councillor.

Chairman Peter Wilson: wilsonatparkbourne@btinternet.com

Cllr Ian Robinson: irobinson773805@gmail.com

Cllr Mary Smith: marysmith.message@virgin.net

Cllr Ron Solomon: ron.priorhouse@gmail.com

Cllr Kevin Mellor: kevinjohnmellor@gmail.com

Cllr Douglas Carr: austin.carr@talk21.com

Cllr Iain MacDonald: ismacdonald@yahoo.co.uk

Due to flood damage the Parish Wharf facilities such as the steps to the river and the seat are dangerous. Please avoid using these parts of the Wharf and any other sections deemed unsafe as determined by personal inspection.

It is expected that another large caravan will be transported to the Traveller Site off Haywood Way in May. The transport will be much quicker if there are no cars parked on the route. With this in mind the transport company and site owner have been requested to give plenty of notice so the exact date and time can be included in the April or May edition of the parish magazine. The Clerk also requested that the land owner deliver flyers to the critical households.

BT has been installing full fibre to Cleeve Prior homes. This upgrade will allow for much faster broadband download speeds. Parishioners can find out more information by visiting the BT site or calling 0800 587 4787.

Parish and Council representatives met with Severn Trent engineers regarding Quarry Lane improvements. There will be an emergency plan submitted on 16 02 21 to lay compacted P1 stone (top grade) in pot hole areas, skim high mud areas so water can flow off the land and possibly cut grips off the lane. The work will hopefully be completed by the end of March.

The Council plans to erect a wooden picket fence around the school play equipment area when the Covid-19 lockdown is lifted.

Tree management work on the Village Green commenced on 17th February.

For a complete picture of Parish Council activities please see the Minutes on the Council website:

www.cleevepriorparishcouncil.co.uk/

Sean Arble, Clerk to the Council
01789 490 501, clerk.cleeveprior@gmail.com



The Cleeve Prior Volunteers are still here to help during lockdown.

To access help from the volunteers please contact either
Susan Robinson: call 01789 491380; text or WhatsApp 07880 493600;
Email – paulj.robinson@btinternet.com
Iain MacDonald: 07826 866775 call, text or WhatsApp
Email – ismacdonald@yahoo.co.uk

Volunteers follow Government guidance and practise social distancing so will support you safely.

Stay safe!



CLEEVE PRIOR WAR MEMORIAL VILLAGE HALL

email: cleevepriormemorialhall@gmail.com

The Centenary Celebrations for the opening of the Cleeve Prior War Memorial Village Hall

The Memorial Village Hall was opened a hundred years ago this month, to the best of our knowledge. It was the intention of the Management Committee to celebrate this occasion in the village, but unfortunately this has had to be postponed until the current restrictions are eased.

We include below the simple story from the Cleeve Prior Chroniclers Archive of how the Hall project came to fruition.

With the end of the Great War Cleeve Prior celebrated as did everyone else in the country. We are told:

“The Village presented a gay appearance with flags flying from numerous houses, whilst church bells were rung joyfully to proclaim the happy celebration of peace, the weather was bad for outdoor games. This did not prevent a merry time being spent by the children for whom a sumptuous tea was provided under the management of Miss Smithin, Miss K Sheaf, and Miss Gull in Mr. Smithin’s Barn which was hastily prepared for the occasion. The children assembled at the school and marched up the village bearing flags which had been given to them by Mrs. Perkins. A goodly number of ladies assisted with the tea & games which followed, when some gentlemen came to enliven the party. Mr. Mayer brought a splendid gramophone and some dance music, Miss Newton gave gifts to every child, and each child dispersed bearing a little basket of cakes and a sixpence.”

After the Great War Cleeve Prior, like many English villages, wanted to honour their fallen and build a war memorial. There was great discussion and the village decided to create a new Memorial Village

Hall, as there was no meeting place in the village. Up to this time all large events seemed to take place in Lilac Cottage on Froglands Lane as they had a big front room. In August 1920 the Evesham Journal tells us that the then owner of Peacock House, Mr Fred White, offered the old Malt House for reasonable terms, a sum of £1,000. This offer was gratefully accepted by the committee. As early as 3 January 1920 they started raising funds with a Christmas night entertainment, when “a capital musical programme was presented”. This was followed by whist drives and dances and concerts. The event of the season was the Cleeve Prior Village Fete on 7 August (see photo: watching the sports) - which included sports, a great funfair, and Evesham Military Band - the proceeds from which went to the building of the Village Hall. The fund raising was going well, and in October the initial works were started by Messrs. Espley & Co Ltd of Evesham. Then :



“out of the blue came an offer of £500 from Mr. Tom Mayer, and the old Malt House was transformed into the beautiful village hall which is used to this day, enjoyed by all”

In *The Story of Cleeve Prior* by Audrey Baylis, it is suggested that a Farmer Sparrow sold the Malt House to the village, but recent research has shown that, although he was on the census in 1901 and 1911, this was probably only as a tenant. The farm was put up for auction by the Manor at the same time as Field Barn, and it was then that it was bought by Fred White. Fred had been the landlord of the pub for some years, and this purchase could have been a move towards retirement. We will learn more when the census is published this year.

In the 1911 census we see a Mr. Thomas Mayer, 62, living at Annie Gull’s boarding house with her daughter Dorothy Gull, 29. Thomas Mayer owned a nuts and bolts manufacturing factory in Birmingham & it was rumoured that he was a millionaire.

“He brought the first car to the village. It was a Lanchester, and a man called Phostin drove it for him when he went to Broom Station or Birmingham. Kids used to see it come home at night - a rare sight in those days.”

Kelly’s Directory lists Thomas Mayer as living at a house called Orchard Cottage, so we presume this was the boarding house, although we are not sure where this actually was, possibly on West End, which in those days was called Queen Street. Thomas Mayer had now been living in the village for over nine years and in February 1920 his youngest daughter, Miss Emmeline Louise Mayer, married Capt. Joseph Arthur Smithin, MC, only son of Mr. and Mrs. J. Smithin. He was obviously well thought of and well connected in the village. On 4 December 1920 a ceremony was held in the hall, unveiling the Memorial Tablet erected in the memory of those members of the parish of Cleeve Prior who perished in the Great War.

On completion of all the works in March 1921 the Cleeve Prior Memorial Hall was opened.

*Extracts from: www.cleevepriorchroniclers.com/articles/
Cleeve Prior Life & Times Extras and Early Recollections of Eli Ankers.*

As many residents will know, the extension to the Hall was opened in 2000. This incorporates two committee rooms, a much improved stage area, and a redesign of part of the undercroft to accommodate, at that time, the sub Post Office and lobby. The construction was funded by a Lottery Grant together with a significant sum raised by the local community.

Memorial Hall AGM, 2021

This is normally held in February, following the year end at 31 December, but will be held later in the year, within the 10-month period specified by the Charities Commission.



Cleeve Prior NWR

And still we Zoom.....

To dispel the winter gloom, our February meeting found us cast adrift on our own personal Desert Islands. It was rather lovely to be able to contemplate sun, sand and a sparkling blue ocean for a while. In the spirit of the evening, there were sun hats aplenty with the odd inflatable palm tree swaying in the wind.

The spirit of the late lamented Roy Plomley was very much with us as we each choose our book – apart from the Bible and Shakespeare, our luxury – which was a bit problematic for some as there was no internet or 5G on our islands and, lastly, the disc we would rescue if all our music choices were being swept into the ocean. There were some interesting and original choices which gave rise to a very lively Zoom type conversation.

Whilst we are enjoying these sessions, we do so long for the time when we can be together and meet with our members who don't "do" Zoom. Until that time comes, our next Z meeting will be on TUESDAY 9 March at 7.30 pm, when our topic will be BIRTHDAYS.

The time WILL come when we can start having proper meetings and it would be lovely to have some new members and to welcome back any old ones.

In the meantime, NWR are still organising online lectures which have been excellent, and Gina reported on some of the ones we have already enjoyed. The next one on Thursday 25 February is "A Nice Cup of Tea" and on 4 March we will have "Fashion, Fury and Feminism – Women's fight for Change". They both sound intriguing.

Evelyn Wilson, 722814



Cleeve Prior Heritage Trust

Registered Charity Number 1063291

News from Field Barn

We have two big thankyou's to make this month.

Firstly to members of the Garden Club who donated all their remaining funds for use at the Heritage Trust. As you may know we have an enclosed garden and now also the Hovel Garden which is a new project. With a huge pruning task ahead, hopefully before the end of March, we could certainly do with some extra volunteers.

Our second thank you is to Gordon Davidson and the team from ADI Automotive, which is part of the ADI group based in Kings Norton, Birmingham. The guys working on the project to provide electricity to the Hovel and sheds were Matt Inglis, Darren Rose and Dan Corser. Again, without your generous help the Heritage Trust could not be so successful.

At our last meeting we welcomed two new Trustees, Kevin Mellor, nominated by CPPC, and Paul Wadsworth who has been helping with our accounts and has now been appointed as Treasurer.

As ever we are seeking frogspawn for the ponds please! Parishioners needing a shorter walk are welcome to park up at Field Barn and walk with their dogs in the Orchard. Please avoid Tuesday mornings once lockdown is over!!! The spring flowers are coming out and you should see the low flying buzzard.

This year's cider is proving very popular and comes highly recommended. If you would like to purchase contact either Brian on 773075 or Phil Garnett Clarke on 773287 for details.

We have had a good response so far for new volunteers but will still need more for when we can start again.

Gina Carr, Trustee

Cleeve Prior Lockdown Quiz

1. It is believed that a church was originally established in the area of Cleeve Prior in AD 872. Who was King of Wessex at this time?
2. How many bells are fitted in St Andrew's church?
3. The clock was added to the tower of St Andrew's church in 1899 to celebrate which event?
4. What is the number of the B road from Cleeve Prior to Evesham ?
5. At the time of the Domesday Book Cleeve Prior mill was owned by the Church in Worcester. The Miller was required to pay an annual rent of a sextary (about six gallons) of what material to the church?
6. The Hall in Cleeve Prior was established at the end of WW1 as a memorial to those villagers who had fought and died in the conflict. The building had originally belonged to Peacock House Farm. What was the original function of the building as part of the farm?
7. In what way was the Memorial Hall used during WW2?
8. In round numbers what is age of the village school?
9. What is the name of the pre-school operated within Cleeve Prior School?
10. What is the name of the convalescent home established in the village for ladies subsequent to treatment in Birmingham's Women's' Hospital?
11. What is the date on the sign of the King's Arms pub?
12. How many bus stops are officially listed in Cleeve Prior by the bus company?
13. How high is the church tower of St Andrew's church?
14. What are the geographical coordinates of Cleeve Prior.
15. What is the number of the bus between Cleeve Prior and Evesham?

16. How many dwellings are listed in Cleeve Prior?
17. When does the Parish Council routinely meet?
18. In olden times the Vicar of Cleeve Prior was required to provide a yearly gift of what bird to the Prior of Worcester?
19. Many buildings in Cleeve Prior are built of Blue Lias stone. What is the approximate age of Blue Lias stone?
20. Pear Tree, The Old, The Lindens, The Croft, what comes next?
21. Where are the answers? You will find them elsewhere in this Newsletter.

Compiled by Les Bratt



Benefice

MESSY CHURCH BAGS

for

GOOD FRIDAY/EASTER

delivered on 31 March.

Info to penny@alexchristison.f9.co.uk

with ages of your children and address

before 23 March 2021

It is all free

Too good an offer to miss. Covid-19 rules will apply. Please contact team members: Sue Jinks, Lisa Farmer, Angela Gray, Penny Christison We look forward to hearing from you. Thank you.

What is the Evesham & District u3a?

The u3a is a national **mutual aid** organisation, set up for people in their 'third age'. It is led by volunteers, offering opportunities for members to learn from each other and make new friends. Everyone is invited to contribute their own particular skills, knowledge and experience. All Group Leaders and Committee members are volunteers, which keeps our costs so low. Evesham & District u3a was started with a handful of people in 2001 and has now grown to over 900 members.

Who can join?

Everyone who is retired or semi-retired is most welcome to join. All learning is learning for its own sake. No qualifications are required to become a member, nor are there any qualifications on offer.

Why join the Evesham & District u3a?

There are so many activities on offer and so many lovely people to meet. If you are looking for something to keep your brain and body fit and active, we may have just what you need. You are assured of a warm welcome! Members have access to over 80 interest groups plus free entry to our monthly meetings with lectures in Evesham Town Hall or via Zoom during lockdown.

How to become a Member

The Evesham & District u3a membership year runs from 1 November to the following 31 October.

As a special offer, new members can JOIN FOR FREE until November 2021

For more details and information explore the **Join Us** page on our website <https://u3asites.org.uk/evesham/home> or contact our Membership Secretary on 07827 637923.

News from the Kings Arms

Greetings to everyone,
from Donna, Henry and the team



Takeaway available:

Thursday

Friday

Saturday night and

Sunday lunchtime.

Collection only.

Payment on collection – cash or contactless.

Delivery available in Cleeve for vulnerable adults who are isolating.

Please contact us. Lunch orders may also be available for these people.

Requests for certain foods also negotiable.

Full takeaway menu displayed on our **NEW website**:

www.kingsarmscleeveprior.co.uk

and **NEW email**: enquiries@kingsarmscleeveprior.co.uk

Tel: 01789 601706.

See you all very soon,

Donna, Henry and the team

Answers to the quiz

1. Aethelred 1, 2. 6, 3. Diamond Jubilee of Queen Victoria, 4. B4085, 5. Honey, 6. The Malt House, 7. An Army Workshop, 8. 150 years, 9. Little Chestnuts, 10. Gertrude Myers Home, 11. 1542, 12. Seven, 13. 68 feet 7 inches, 14. 52.14236 N 1.875174 W, 15. 247, 16. 249, 17. Every second Monday of the month at 7.30 pm, 18. A Peahen, 19. 200 million years, 20. Wellington



eezyPC

. . . *is fixing IT*

Computer and Laptop repairs
Microsoft Certified Professional

Wireless * Broadband * Hardware * Software
On-Site * Home Visits * 01386 576132

JMG Property Maintenance

Works include: garden maintenance and clearance;
fence work, repointing, roof de-mossing, external painting,
gutter cleaning and clearing, patio cleaning,
window cleaning.

Call 01789 490672, mobile 07342 965960
Email: jarradgavin@gmail.com

WILDLIFE & WILDERNESS

OUTSTANDING TAILOR-MADE HOLIDAYS &
EXPERT LED TOURS WORLDWIDE

Safaris : Luxury Holidays : Northern Lights : Winter Activities
Expedition Cruises : Family Adventures

AFRICA : INDIA : LATIN AMERICA : AUSTRALIA :
NEW ZEALAND : CANADA : EUROPE.

CALL US AT OUR BROCKWEIR OFFICE, 01625 838225,
WILDLIFEWILDERNESS.COM. Dr Steve Banner (FRGS)

5 Star Rated Multi-Award Winning Hair Salon



CREATIVE
HAIR STUDIO

The Home of Hair Colour in Evesham



Expert Colour Specialists



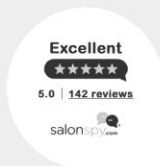
Hazel is our Schwarzkopf Master of Colour Expert, with over 6 years experience. Her passion for the art of designing colour transformations is fantastic. Hazel also specialises in curly hair designs.



Kim is one of our curly hair specialists and welcomes the challenges that curly hair can provide. Her expert knowledge when advising designs and homecare to maintain your curls at home is amazing.

Booking Line: 01386 833397

- ✓ Curly Hair Specialists
- ✓ High Quality Home Care Range
- ✓ COVID-19 Safe Salon



creativehairblackminster.co.uk

bookings@creativehairblackminster.co.uk

Unit 1B, Blackminster Business Park, Evesham Worcestershire WR11 7RE





Amanda Copperthwaite Select Mortgages

For all your Mortgage and Protection Requirements

Remortgages / Home Movers / Additional Borrowing / First Time Buyers / Help to Buy / Buy to Lets

There are so many mortgage products available and finding the right one is not easy. Let me do the hard work for you, from the beginning through to completion, liaising with lenders and solicitors on your behalf.

For personal, professional, no obligation mortgage advice from a qualified and experienced "whole of market" mortgage consultant, please call or text me 07785 270217 or email amanda@select-mortgages.com. I do not charge fees for my services.

Select Mortgages UK Ltd is authorised and regulated by the Financial Conduct Authority FCA 571378

Your home may be repossessed if you do not keep up with repayments on your mortgage.

MG Roofing Repairs

No job too small.

Slates, tiles, ridge tiles, leadwork, Guttering, Firestone Flat Roof Systems, Chimneys, repointing.

Storm Damage and Insurance work welcome

Stratford upon Avon and surrounding areas

01789 490672, 07799 870848

mgroofingservices@btinternet.com

42 The Close, Cleeve Prior



Food Fayre

Established 1973, Catering for all occasions

Canapés, Casseroles and Desserts
Cocktail, Lunch and Dinner parties
Freezer food for individuals and families
Buffets, breakfasts, suppers, hampers and cakes

For hire:

China, cutlery, linen and champagne glasses and all you need in your kitchen and for a party

Meals, prices and menus to suit individual requirements can be delivered or cooked and served at your home or venue.

Cairi Dyson, Email: cairid@yahoo.co.uk

Tel: 01789 491417, 07803 720184

*Hairdresser and Makeup Artist with 9 Years salon experience
A Home Salon based in Evesham and limited mobile service in
Evesham, Cleeve Prior,
Bidford on Avon and surrounding villages*



**Cuts, colours, perms, blow-dry, sets and hair updos*
Wedding & Prom packages available including makeup
CND Shellac nails *Eyebrow shaping & tinting and
Eyelash tinting**

M: 07393 407515 E: thehairloungebyaimee@icloud.com

F: www.facebook.com/thehairloungebyaimee

Adika Building & Landscapes

Local references supplied

Brickwork Fencing
Carpentry Driveways
Patios Landscaping
General building work Property maintenance

Contact Adam: 07852 428994

Email: Adikabuildingandlandscapes@outlook.com



**Creating hand cooked, healthy,
tasty ready meals, freshly frozen
and delivered to your door!**

Eat Healthy - Stay Healthy!

Choose from our Healthy,
Seasonal Gourmet or
Vegetarian menus

You order - We deliver - You enjoy!

For full information please visit:

www.harry-bones.co.uk

or

enquiries@harry-bones.co.uk

Tel: 07999 343 766

Based locally in Welford

**Just
230 - 450
calories**
in our healthy
range

**ALL
MEALS COST
ONLY £5!**
WITH FREE
DELIVERY*
*Min order
5 meals



Cleeve Prior Garage

*Offering a full range of garage services
at competitive prices.*

Servicing, Brakes, Clutches,
Diagnostics, Exhausts, Timing Belts,
Tyres, Suspension
MOT Preparation and Repairs
Free Local Collection & Return



*Member of The Federation of Small Businesses
Over 40 years in the trade*

T: 01789 773795 M: 07977333719 E: jcsmotors@yahoo.co.uk

St Joseph The Worker Catholic Church

Quinney's Lane, Bidford on Avon B50 4JL

Parish Priest: Canon Garry Byrne

Telephone: 01789 773291 Website: sjtw-bidford.org.uk

**Copy for inclusion in the April 2021 edition
by Wednesday 24 March please**

Please submit copy by email to the following
email address: cleevepriornewsletter@gmail.com
or contact the Editor, Susan Mortimer (773453)

The Editor would be pleased to receive any photos of local interest for possible inclusion in future Newsletters. Please email them to the above address.

This Newsletter is published by St. Andrew's PCC