



Cleeve Prior Chroniclers Photo Archive
Field Barn



Cleeve Prior Chroniclers Photo Archive

The Cleeve Prior Heritage Trust looks after 27 acres (11 ha) of old pasture, traditional orchards, woodland and ponds that have been acquired by the village over the years. A Charitable Trust started in 1997, it is based in the Grade II listed Field Barn. Local volunteers meet every Tuesday from 10.00am until 1.00pm. During that time we carry out a wide variety of jobs depending on the time of the year. From time to time we also undertake projects in order to maintain and develop the asset's. We also organise events at specific times of the year to raise funds whilst at the same time bringing our local community together



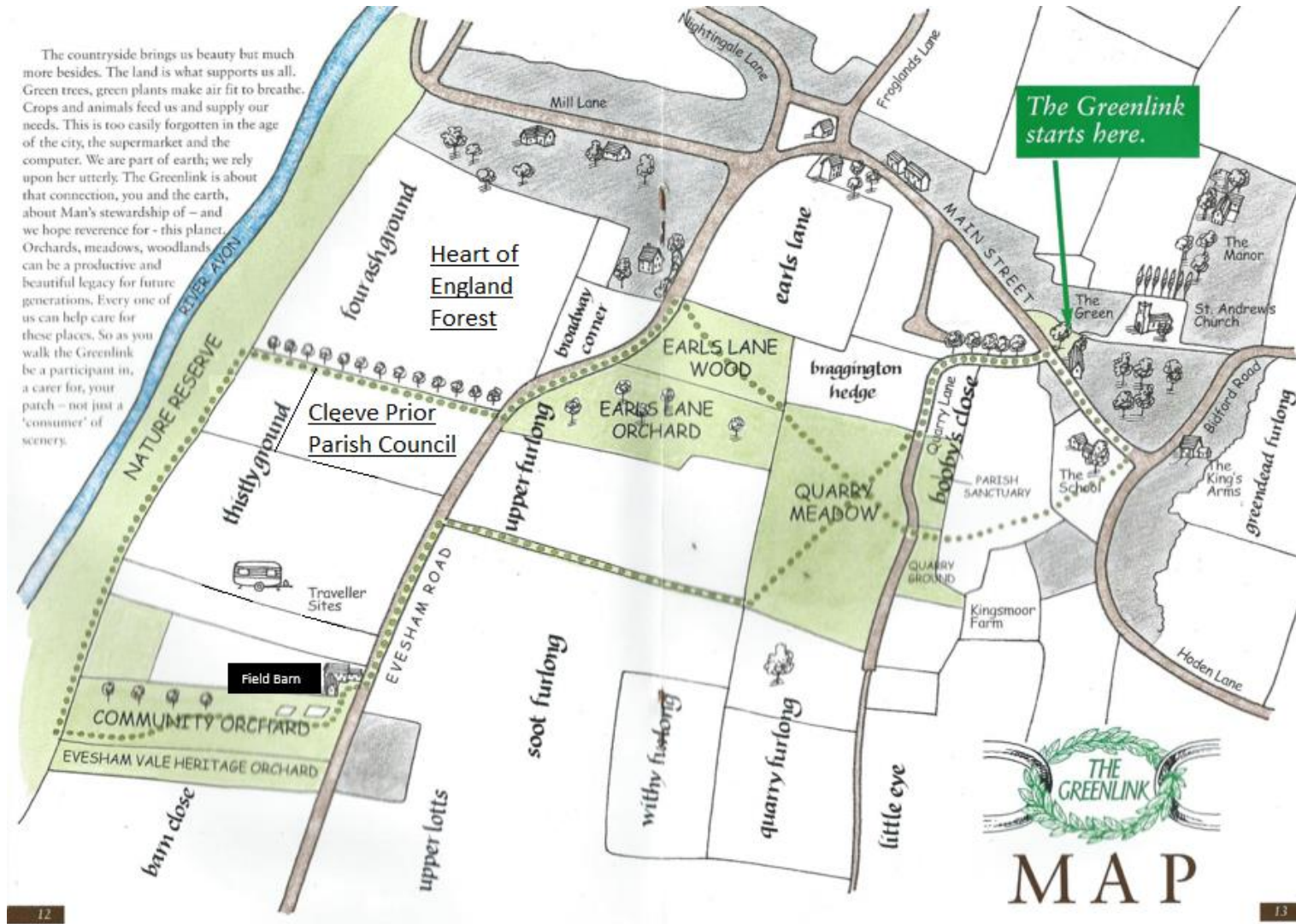
A view of the village from Field Barn





Cleeve Prior Chroniclors Photo Archive

The countryside brings us beauty but much more besides. The land is what supports us all. Green trees, green plants make air fit to breathe. Crops and animals feed us and supply our needs. This is too easily forgotten in the age of the city, the supermarket and the computer. We are part of earth; we rely upon her utterly. The Greenlink is about that connection, you and the earth, about Man's stewardship of - and we hope reverence for - this planet. Orchards, meadows, woodlands can be a productive and beautiful legacy for future generations. Every one of us can help care for these places. So as you walk the Greenlink be a participant in, a carer for, your patch - not just a 'consumer' of scenery.





Cleeve Prior Chroniclers Photo Archive



The works started
in 1997 with the
clearing leveling
out of what was to
become the
community garden





Cleeve Prior Chroniclers Photo Archive



The works started in 1997 with the clearing leveling out of what was to become the community garden





Cleeve Prior Chroniclers Photo Archive



The works started in 1997 with the clearing leveling out of what was to become the community garden





Cleeve Prior Chroniclers Photo Archive



The works started in 1997 with the clearing leveling out of what was to become the community garden





Cleeve Prior Chroniclers Photo Archive



The next major project was the closing in of the garden and the rebuilding of the derelict walls



Cleeve Prior Heritage Trust
Field Barn WR11 8JX



Cleeve Prior Chroniclers Photo Archive





Cleeve Prior Chroniclers Photo Archive

East Wing

This is how the East wing looked before work commenced





Cleeve Prior Chroniclers Photo Archive

East Wing



Works started in March 1998 to stabilise the roof and relay the floor



Cleeve Prior Heritage Trust
Field Barn WR11 8JX



Cleeve Prior Chroniclers Photo Archive

East Wing



Serious structural work was required to make the roof supports sound





Cleeve Prior Chroniclers Photo Archive

East Wing



By May it was starting to look more like the area we know today



Cleeve Prior Heritage Trust
Field Barn WR11 8JX



Cleeve Prior Chroniclers Photo Archive

East Wing



By January 1999 it is finished, but something is missing



Cleeve Prior Heritage Trust
Field Barn WR11 8JX



Cleeve Prior Chroniclers Photo Archive

East Wing





Cleeve Prior Chroniclers Photo Archive

Field Barn



Alongside the works to the East Wing April '98 saw the repairs to its roof and that on the main barn to ensure they were watertight and secure





Cleeve Prior Chroniclers Photo Archive

East Wing

In 2002 it was decided to re-site the old manger from the South Wing into a new location against the back wall in the now refurbished East Wing. Works started in October





Cleeve Prior Chroniclers Photo Archive

East Wing

This was
completed in
spring 2003



Cleeve Prior Heritage Trust
Field Barn WR11 8JX



Cleeve Prior Chroniclers Photo Archive



South wing before works commenced





Cleeve Prior Chroniclers Photo Archive



In its latter years of agricultural use, the south wing had been converted in to lock up stores for individual market gardeners





Cleeve Prior Chroniclers Photo Archive



In September 1999 works started with the stripping out of the old partitions forming the individual units



Cleeve Prior Heritage Trust
Field Barn WR11 8JX



Cleeve Prior Chroniclers Photo Archive



The old feed trough was to be carefully removed and preserved for re use in the east wing





Cleeve Prior Chroniclers Photo Archive



It was at this stage that an old staddle stone base was discovered buried in the floor



All cleared



Cleeve Prior Heritage Trust
Field Barn WR11 8JX



Cleeve Prior Chroniclers Photo Archive



The South Wing ready
for fit out





Cleeve Prior Chroniclers Photo Archive



In September 1999 the team started to lay the floor



Cleeve Prior Heritage Trust
Field Barn WR11 8JX



Cleeve Prior Chroniclers Photo Archive



Between November 1999 and February 2000 the wing was made weather proof





Cleeve Prior Chroniclers Photo Archive



Throughout 2000 the inside of the external walls were completed



Cleeve Prior Heritage Trust
Field Barn WR11 8JX



Cleeve Prior Chroniclers Photo Archive



In April 2001 the team were
in a position to re-roof the
South Wing



Cleeve Prior Heritage Trust
Field Barn WR11 8JX



Cleeve Prior Chroniclers Photo Archive

It was not until March 2002 that works started in earnest to complete the floor





Cleeve Prior Chroniclers Photo Archive

Through out the winter of 2002



And the spring of 2003



The ceilings were finished





Cleeve Prior Chroniclers Photo Archive



The kitchen was finished
by April 2003 and the
office by early 2005





Cleeve Prior Chroniclers Photo Archive



Until the major works were completed the Field Barn itself was a storage area and workshop. It was in a poor state of repair especially the floor





Cleeve Prior Chroniclers Photo Archive



Until the major works were completed the Field Barn itself was a storage area and workshop.

It was in a poor state of repair especially the floor

We see here examples of the worst two areas which had to be dealt with.





Cleeve Prior Chroniclers Photo Archive



Starting in July 2002 and through the summer the focus of activities was the relaying of the floor to the main barn, which involved some very laborious pointing on completion





Cleeve Prior Chroniclers Photo Archive



Through 2004 the teams attention tuned to the eco shed, which was to provide a compostable toilet and a ground heated water system





Cleeve Prior Chroniclers Photo Archive



Through 2004 the teams attention tuned to the eco shed, which was to provide a compostable toilet and a ground heated water system





Cleeve Prior Chroniclers Photo Archive



The heating was to be supplemented by Solar panels to the roof

This shed has now been converted by the current CPHT Project team and now houses the modern and well appointed toilets





Cleeve Prior Chroniclers Photo Archive

The re-development of the Eco Shed to a toilet block became to be known as the “Wee Project”



Composting toilet



Chemical toilet



State of the art

A much required transition !!!!!





Cleeve Prior Chroniclers Photo Archive



The original building and fencing before the project started



In the meantime we started by widening the wall for disabled access





Cleeve Prior Chroniclers Photo Archive





Cleeve Prior Chroniclers Photo Archive



Some of the layers of rock we encountered, after all it is Cleeve Prior



Making the connection 15ft
down in the road





Cleeve Prior Chroniclers Photo Archive



Unloading one of the concrete manhole chambers for installation which was unexpected and delayed the job adding extra cost



The completed road connection - now the real work starts on the CPHT side of the site





Cleeve Prior Chroniclers Photo Archive





Cleeve Prior Chroniclers Photo Archive



Digging the trench for the water supply

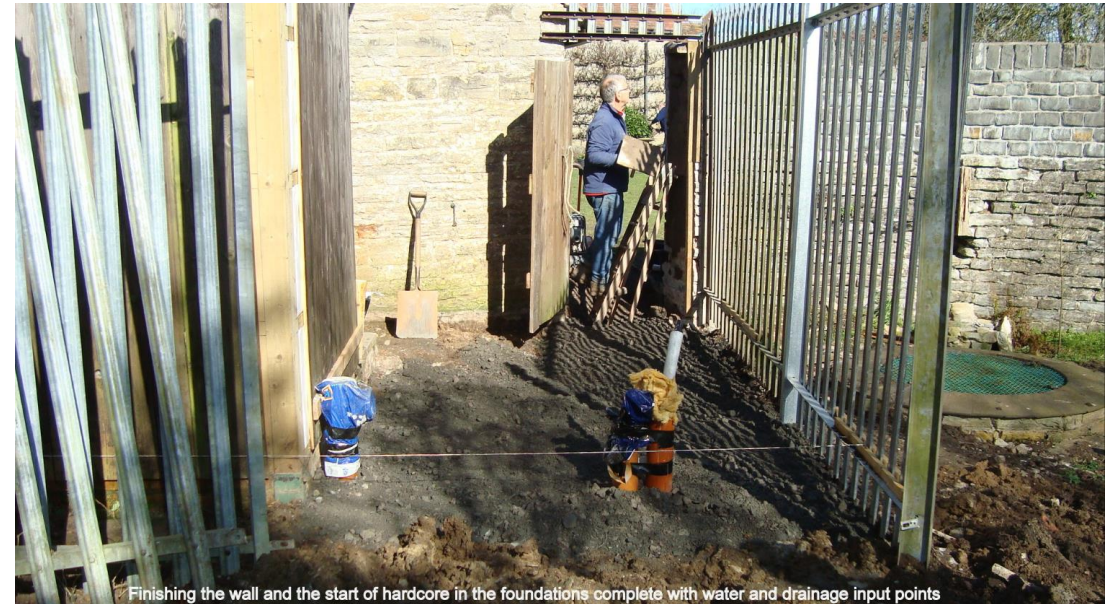


The water and drains are in place in the slab





Cleeve Prior Chroniclers Photo Archive





Cleeve Prior Chroniclers Photo Archive



Pouring the concrete



Concrete poured and the damp course in place





Cleeve Prior Chroniclers Photo Archive





Cleeve Prior Chroniclers Photo Archive



The old and the new walls come together



Insulation and battens are put in place for the cladding





Cleeve Prior Chroniclers Photo Archive





Cleeve Prior Chroniclers Photo Archive



Installing insulation at the start of the internal work including first fix electrics



Plaster boarding complete





Cleeve Prior Chroniclers Photo Archive



Floor tiling under way



Floor finished





Cleeve Prior Chroniclers Photo Archive



Walls insulated and plasterboarded. Ceilings plastered and painted.
Electrical first fix complete



Starting the wall tiles



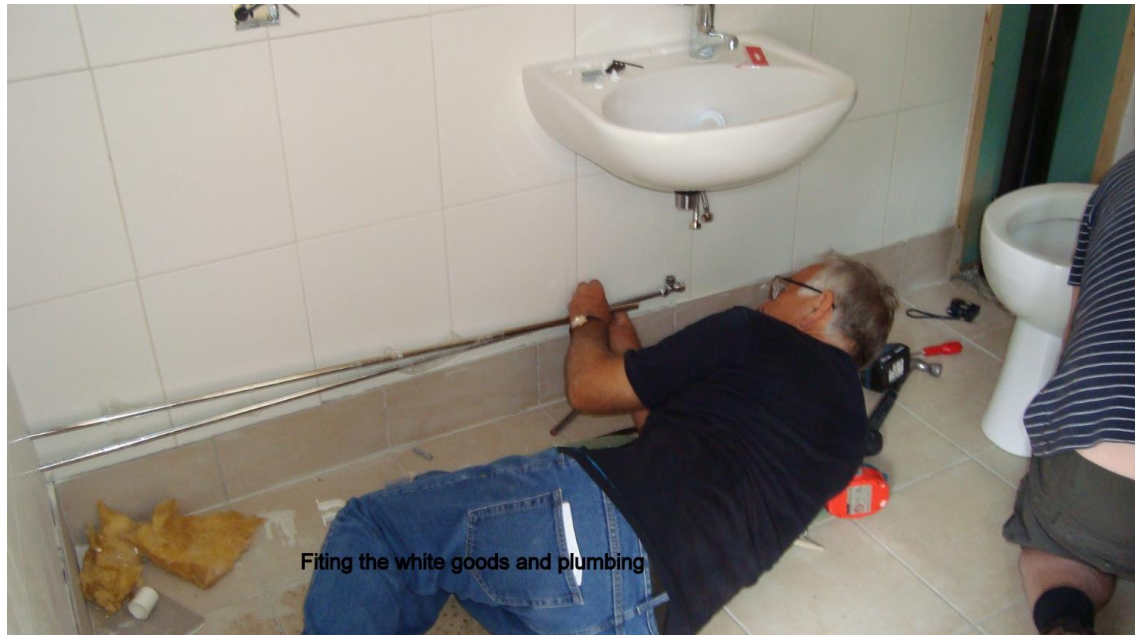


Cleeve Prior Chroniclers Photo Archive





Cleeve Prior Chroniclers Photo Archive





Cleeve Prior Chroniclers Photo Archive





Cleeve Prior Chroniclers Photo Archive





Cleeve Prior Chroniclers Photo Archive



The finished disabled toilet





Cleeve Prior Chroniclers Photo Archive



are the volunteers waiting to use the finished "WEE" Project for the first time

August 15th 2017 12.00 Midday the Building Inspector passed
the finished project - 27 weeks -1934 Volunteer Hours



Cleeve Prior Heritage Trust
Field Barn WR11 8JX



Cleeve Prior Chroniclers Photo Archive



THE COMMUNITY ORCHARD WITH THE PONDS IN THE FORGROUND



PLOT EIGHT ORCHARD





Cleeve Prior Chroniclers Photo Archive

